

TOOLS Prestained Protein Marker

Cat.no.	TM-PM10170	TM-PM10170-2
Product size	250 µl x2	250 µl x10

Storage: Store at -20°C

Description

TOOLS Pre-Stain Protein marker is ready-to-use and pre-mixed with loading buffer for direct loading 3-5 µl on SDS-PAGE. Proteins are covalently coupled with a blue chromophore except for two reference bands (one green and one red band at 25 kDa and 75 kDa respectively) when separated on SDS-PAGE with Tris-Glycine buffer as shown on Figure 1. For different buffers, after running the gel, the marker yields the 10 discrete fragments (Tris-glycine buffer: 10 to 180 kDa, Bis-Tris MOPS: 9 to 170 kDa, Bis-Tris MES: 10 to 170 kDa) as shown on Figure 2. This protein marker is designed for observing protein separation during SDS-polyacrylamide gel electrophoresis, confirmation of Western transfer efficiency on membranes, (PVDF, nylon, or nitrocellulose) and for approximating the size of proteins.

Recommendations

1. Load 3-5 µl/ gel well.
2. Do not boil or dilute or add reducing agents before loading the marker.

The product is for research only, not for diagnostic and clinical use.

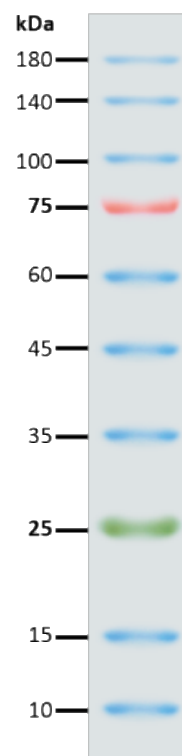


Figure 1 Molecular weight (KDa) in Tris-Glycine buffer

Figure 2.

